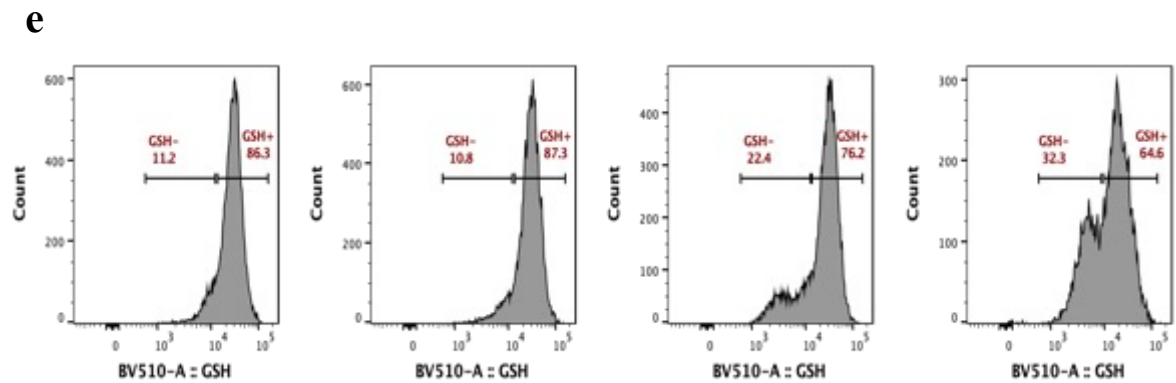
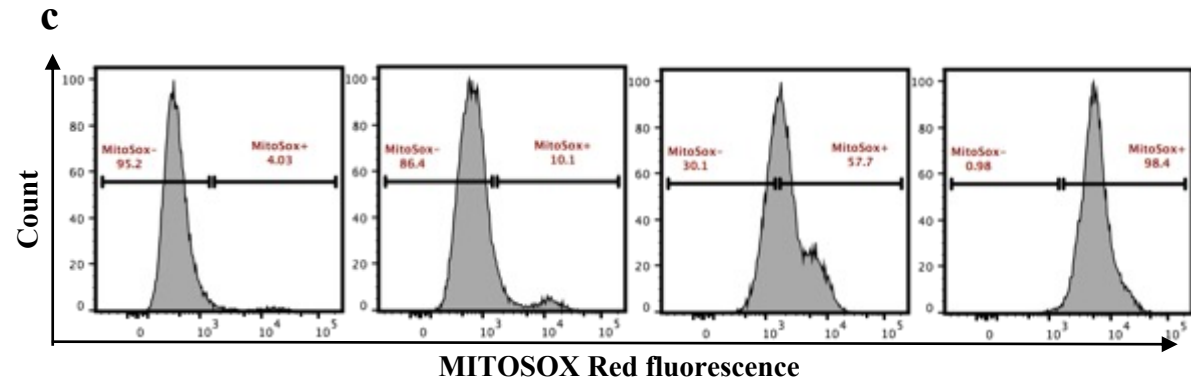
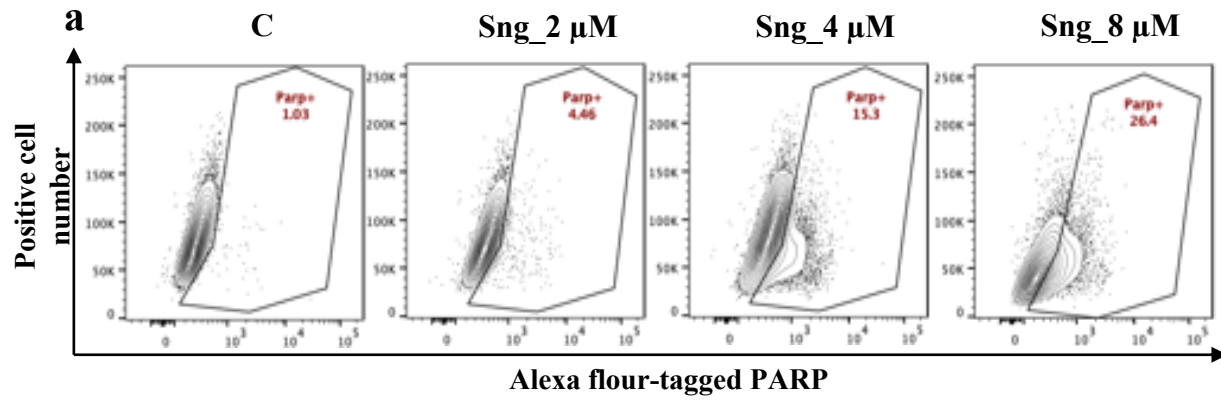
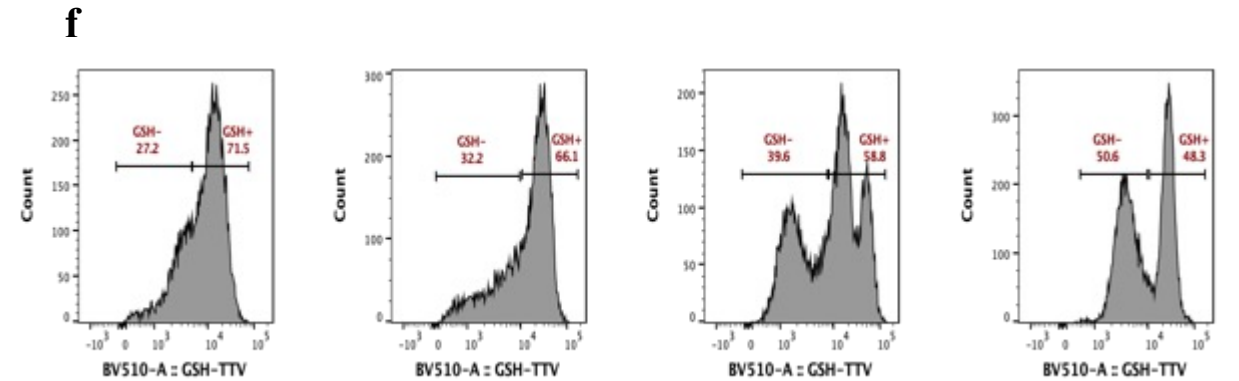
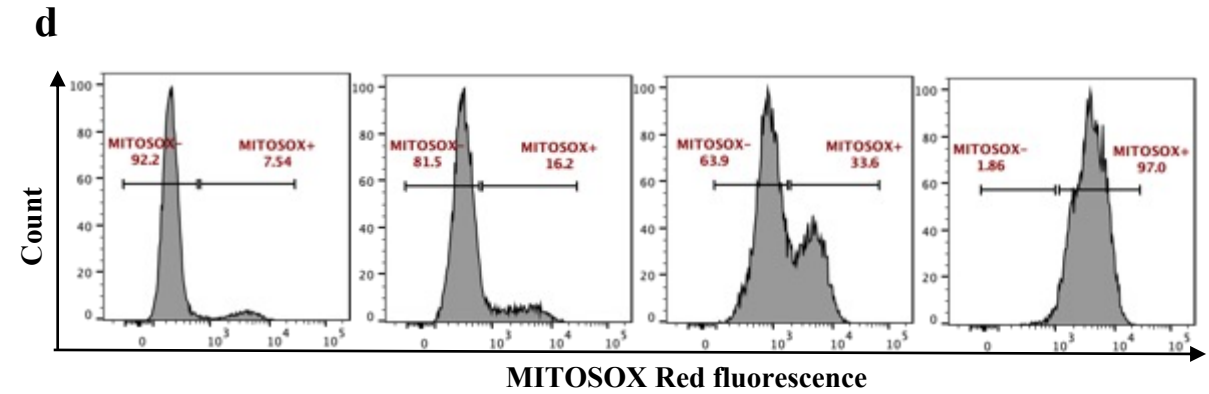
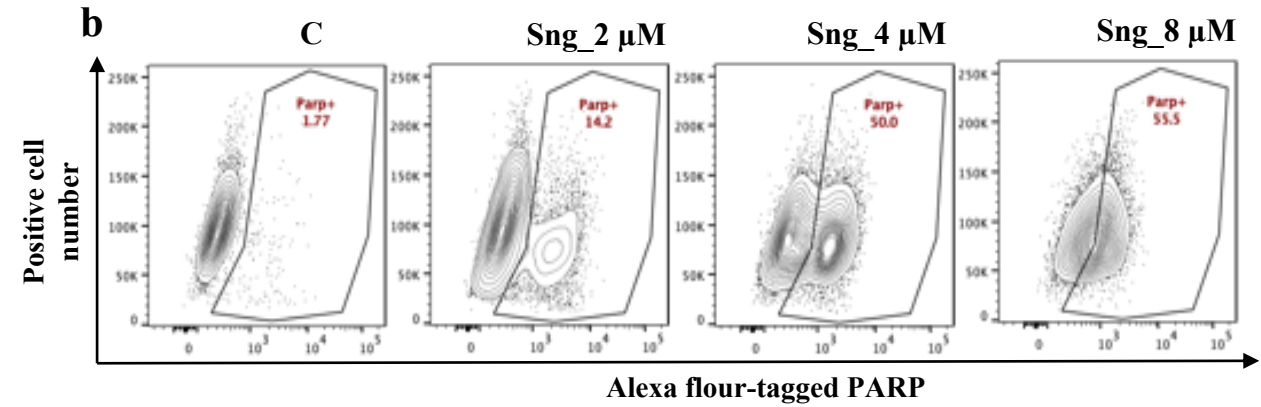


Supplementary Figure 1 (a,b) Determination of cell viability by MTT assay following treatment with Sng (2 μ M) for 0-48 h. Data presented as the mean \pm SD from three independent experiments. ns: not significant, *** $p < 0.001$ compared with the Sng-treated group at 0 h; one-way ANOVA followed by Tukey analysis. **(c)** Microscopic images of cSCC cells showing morphological abnormalities induced by Sng (2 μ M) at different time-points (magnification 10X). **(d)** The distribution of live (indicated by green fluorescence) and dead (indicated by red fluorescence) A388 and A431 cells following Sng treatment (2 μ M) at different time-points. **(e,f)** Western blot showing cleaved caspase-8, caspase-3, and p-H2AX^{Ser139} protein levels in A388 and A431 cells exposed to 2 μ M Sng at different time-points

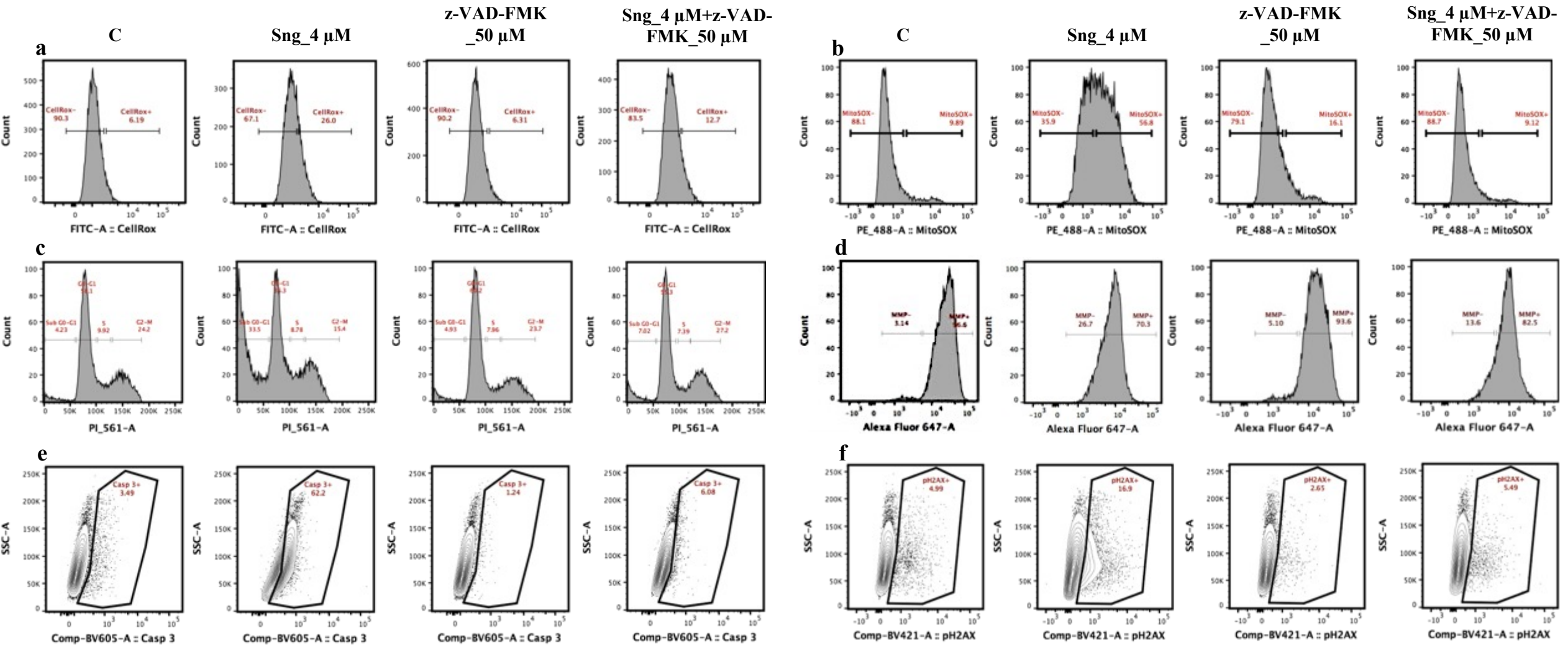
A388



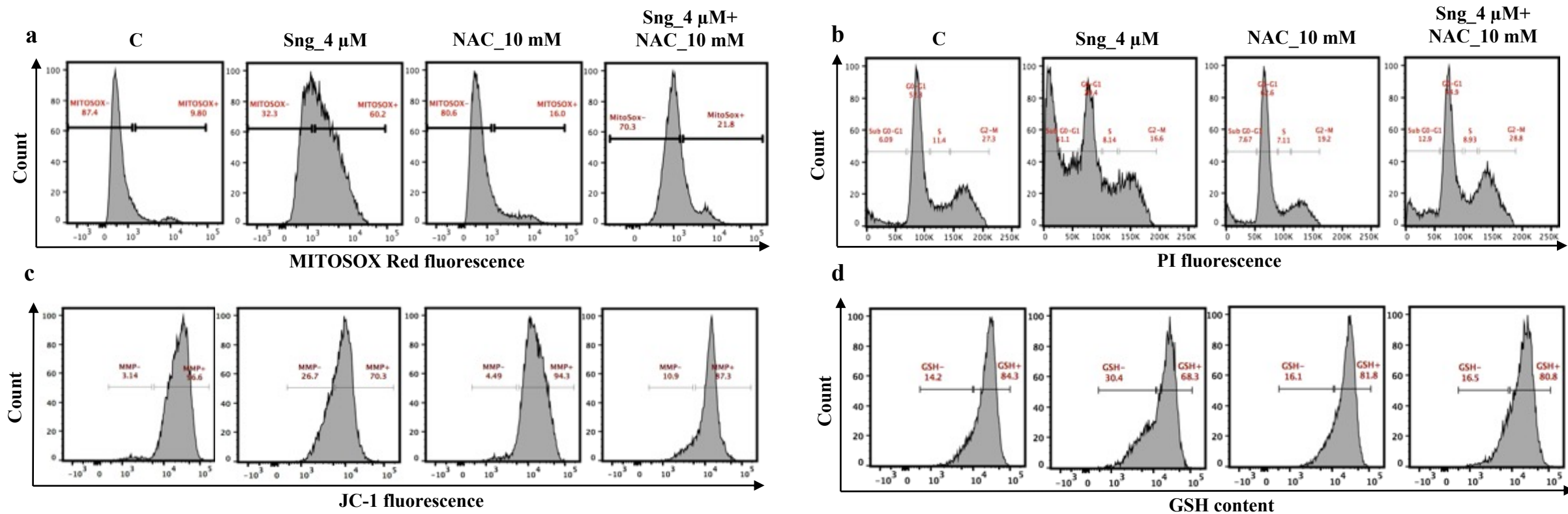
A431



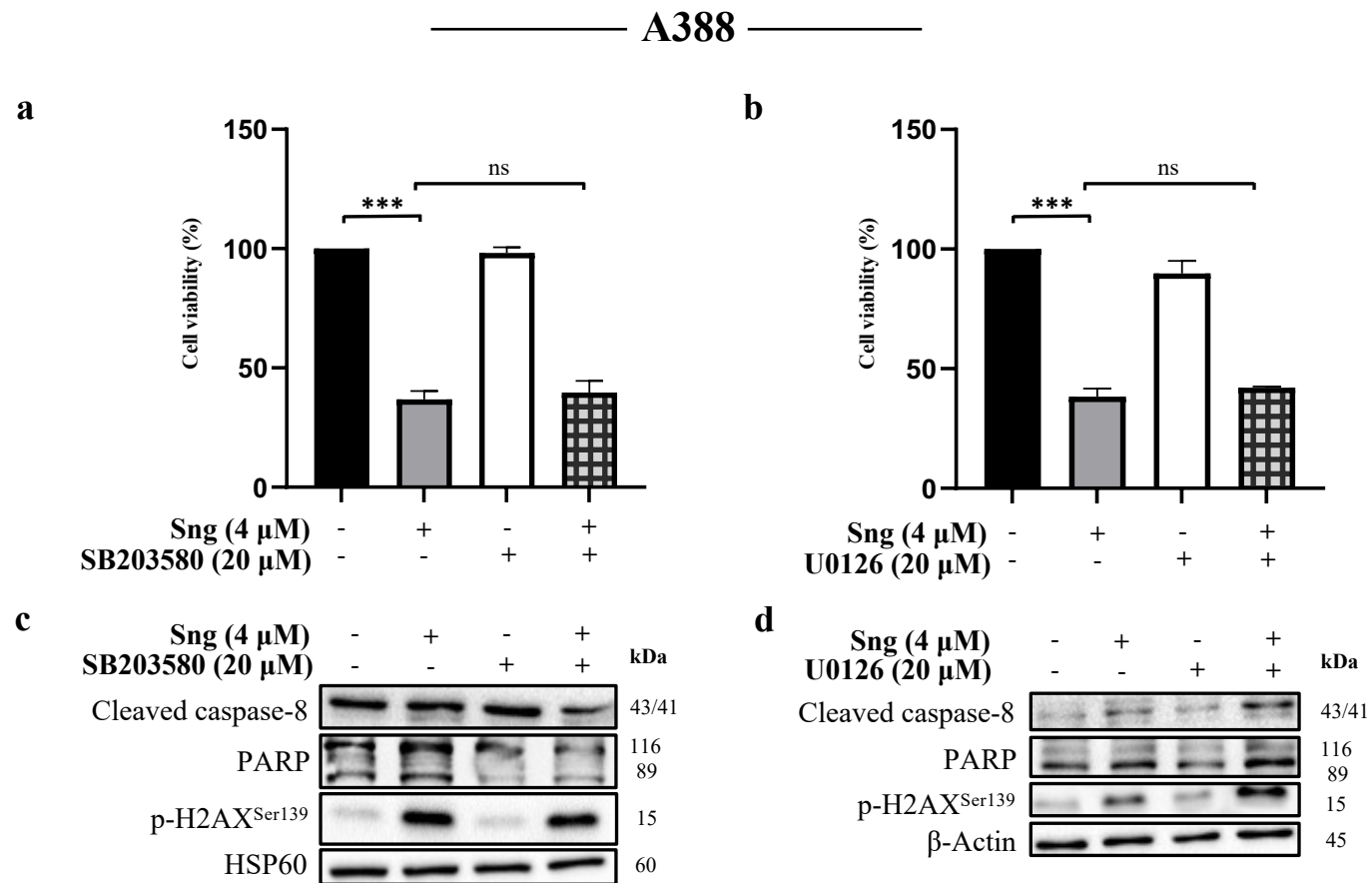
Supplementary Figure 2 Histograms depicting Sng-induced changes in PARP expression, mitochondrial ROS production, and GSH levels in cSCC cells.



Supplementary Figure 3 Histograms depicting changes in ROS production, cell cycle distribution, $\Delta\Psi_m$, caspase-3 activity, and DNA damage in A388 cells pretreated with z-VAD-FMK.



Supplementary Figure 4 Histograms depicting changes in ROS production, cell cycle distribution, $\Delta\Psi_m$, and GSH levels in A388 cells pre-treated with NAC



Supplementary Figure 5 (a,b) Determination of A388 cell viability by trypan blue assay following p38 inhibitor SB203580 or ERK1/2 inhibitor U0126 pretreatment for 2 h. Data presented as the mean \pm SD from three independent experiments. ns: not significant, *** $p < 0.001$ compared with the Sng-treated group; one-way ANOVA followed by Tukey analysis. **(c,d)** Western blot showing CC8, PARP, and p-H2AX^{Ser139} protein levels in A388 cells exposed to 2 h pretreatment with SB203580 or U0126